

PALEONTOLOGY

A mid-Cretaceous embryonic-to-neonate snake in amber from Myanmar

Lida Xing^{1,2}, Michael W. Caldwell^{3*}, Rui Chen⁴, Randall L. Nydam⁵, Alessandro Paolucci^{6,7}, Tiago R. Simões³, Ryan C. McKellar^{8,9}, Michael S. Y. Lee^{6,7}, Ye Liu^{4,10}, Hongliang Shi¹¹, Kuan Wang¹⁰, Ming Bai⁴

We present the first known fossilized snake embryo/neonate preserved in early Late Cretaceous (Early Cenomanian) amber from Myanmar, which at the time, was an island arc including terranes from Austral Gondwana. This unique and very tiny snake fossil is an articulated postcranial skeleton, which includes posterior preloacal, cloacal, and caudal vertebrae, and details of squamation and body shape; a second specimen preserves a fragment of shed skin interpreted as a snake. Important details of skeletal ontogeny, including the stage at which snake zygospheny-zygantrol joints began to form along with the neural arch lamina, are preserved. The vertebrae show similarities to those of fossil Gondwanan snakes, suggesting a dispersal route of Gondwanan faunas to Laurasia. Finally, the new species is the first Mesozoic snake to be found in a forested environment, indicating greater ecological diversity among early snakes than previously thought.

INTRODUCTION

By the early Late Cretaceous [~100 to 95 million years (Ma) ago], snakes had achieved their initial global distribution with skeletal remains known from Africa (1), North America (2), the Middle East (3–5), South America (6–10), and Southern Europe (11), all comprising skeletally mature specimens occurring in marine and/or fluvial sediments. We report here on the first known fossilized remains of an embryonic/neonate snake, including preserved integument, from Lower Cenomanian (98.8 ± 0.6 Ma ago) (12) amber from Myanmar. A skull is not preserved, but the postcranium shows important similarities to other Cretaceous Gondwanan snakes, for example, *Najash rionegrina* and *Dinilysia patagonica* (6–8). We also describe a second amber specimen containing a large fragment of integument, possibly a piece of shed skin, considered here to be a snake and from a much larger animal. These new snake remains add a significant biological component to an already diverse fauna of rare, small-bodied vertebrate fossils from the amber deposits of northeastern Myanmar (13, 14), which includes the remains of lizards, neonate birds, and neonate nonavian dinosaurs (15–19). The new snake fossils are exceptional as one of them is clearly an embryo/neonate, while the second appears to preserve dark and light patterns in the squamation. In addition, as with the other amber fossils from Myanmar, they are part of the fauna and flora from an indisputably forested environment (13–19), thriving in an island arc system sourced from Austral Gondwana that became a part of the eastern margin of Laurasia. The new fossil snake materials also indicate a greater ecological diversity and global distribution of Late Mesozoic snakes,

and more specifically, Cretaceous snakes, than was previously understood. And finally, the articulated postcranial skeleton provides unprecedented data on the early ontogeny of snakes during the later part of their Mesozoic radiation.

Systematic paleontology

Squamata Oppel, 1811

Serpentes Linnaeus, 1758

Xiaophis myanmarensis gen. et sp. nov.

Holotype

DIP-S-0907 [Dexu Institute of Palaeontology (DIP)] (Figs. 1, A to C, and 2, A to K; and figs. S1 to S4A and S5, A and B), articulated postcranial skeleton (Total Length = 47.5 mm), ~97 vertebrae and ribs, and integument.

Type locality/horizon

Angbamo site, Tanai Township, Myitkyina District, Kachin Province, Myanmar (98.8 ± 0.6 Ma ago; earliest Cenomanian).

Etymology

“*Xiaophis*”—Xiao from the Chinese word for “dawn” and in honor of Xiao Jia, the amber specialist who donated the specimens to the DIP, Chaozhou, China; *ophis*, Greek for snake; and “*myanmarensis*” in recognition of Myanmar.

Diagnosis

Preloacal vertebral centrum roughly triangular in ventral aspect with strong ventral keels and large, paired, subcentral foramina; anterior preloacals have large paired fossae on posterodorsal surface of postzygapophyseal lamina; horizontal pre- and postzygapophyses with small accessory processes on prezygapophyses; elongate, posteriorly directed neural spines, present from anterior vertebrae to caudals; caudals with strongly reduced neural spines, anteriorly directed and horizontal transverse processes, and small spatulate articulating chevrons; potentially three sacral ribs/modified cloacal ribs/lymphapophyses; two to three scale rows per vertebra-rib complex; and body scales small but imbricated and strongly overlapping.

RESULTS

The articulated snake postcranial skeleton is 47.5 mm in total length (Figs. 1, A to C, and 2, A to K; and figs. S1 to S4A and S5, A and B).

¹State Key Laboratory of Biogeology and Environmental Geology, China University of Geosciences, Beijing 100083, China. ²School of the Earth Sciences and Resources, China University of Geosciences, Beijing 100083, China. ³Department of Biological Sciences, University of Alberta, Edmonton, Alberta T6G 2E9, Canada. ⁴Key Laboratory of Zoological Systematics and Evolution, Institute of Zoology, Chinese Academy of Sciences, Beijing 100101, China. ⁵Department of Anatomy, Midwestern University, Glendale, AZ 85308, USA. ⁶South Australian Museum, North Terrace, Adelaide, South Australia 5000, Australia. ⁷College of Science and Engineering, Flinders University, Adelaide, South Australia, Australia. ⁸Royal Saskatchewan Museum, Regina, Saskatchewan S4P 4W7, Canada. ⁹Biology Department, University of Regina, Regina, Saskatchewan S4S 0A2, Canada. ¹⁰Paleo-diary Museum of Natural History, Beijing 100097, China. ¹¹Beijing Forestry University, Beijing 100083, China.

*Corresponding author. Email: mw.caldwell@ualberta.ca

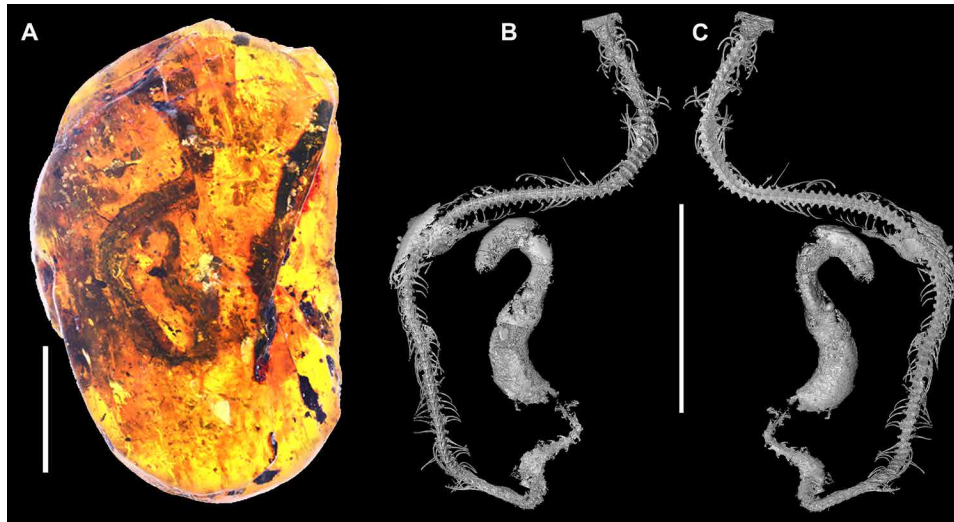


Fig. 1. Overview of amber clast with synchrotron x-ray μ CT image of articulated snake skeleton (DIP-S-0907). (A) Amber clast with included skeletal material. (B) Dorsal view of skeleton, synchrotron x-ray micro-computed tomography (μ CT) image. (C) Ventral view of skeleton, synchrotron x-ray μ CT image. Scale bar, 10 mm.

Individual vertebrae are extremely small (anterior preloacals, ~ 0.5 mm in centrum length; caudals, ~ 0.35 mm in total length), comparable in size and morphology to those of a neonate Asian pipe snake, *Cylindrophis ruffus* (Figs. 2, A to Q, and 3, A to D). There are 97 observable vertebrae, with the anteriormost 87 being articulated, including associated ribs, followed by 10 caudal vertebrae (Figs. 1, 2, A to K, and 3, B and D). Three radio-opaque “masses” partially obscure postcranial osteology and likely represent mineralized remnants of decayed tissues.

The large anteriormost vertebrae are likely mid-preloacal elements. The first vertebra breaches the amber surface, suggesting that many vertebrae were lost (Fig. 1, A to C, and figs. S1 to 4A and 5, A and B). Although an exact count is not possible, reference to the contemporaneous simoliophiid snake *Haasiophis terrasanctus* (155 preloacals; largest preloacal at 70th to 80th vertebra) (5) would suggest that DIP-S-0907 is missing 70 or more preloacal vertebrae plus the skull.

Xiaophis can be identified as a snake based on the following features. The 87 observed, and ~ 160 inferred, preloacal vertebrae exceed counts in all elongate squamates apart from amphisbaenians and dibamids (for example, 55 preloacal vertebrae in the legless anguid *Pseudopus apodus* and 72 in the acontine skink *Acontias meleagris*) (20). However, amphisbaenian and dibamid vertebrae differ from *Xiaophis* as follows: (i) complete absence of zygosphenes and zygantra (see discussion below); (ii) dorsolaterally oriented pre- and postzygapophyseal articulations (horizontal in rhineurids); (iii) fusion of diapophyses-parapophyses forming short, circular synapophyses rather than sinuous, complex articulations; (iv) prezygapophyses not connected to synapophyses; (v) ventrally flattened rather than keeled centra; (vi) subparallel rather than posteriorly converging lateral margins of centra; and (vii) neural spines absent or low (cf. *Xiaophis* and *Dinilyisia* with *Amphisbaena* or *Dibamus*; fig. S4) (21).

In the dorsal view, preloacals appear shorter than wide (Fig. 2, A and B, and figs. S1 and S2), with a tall and steep posterior angle to the neural spine [differentiating *Xiaophis* from other extremely small-bodied snakes, such as scolecophidians (22) or *Coniophis* (23)], distinct epiphyseal pits on the neural spine tip, subhorizontal pre-

and postzygapophyses, small prezygapophyseal accessory processes [similar to *Dinilyisia* (7, 9)], and wide fossae on the posterior margins of the postzygapophyses (Figs. 2, A to K, and 3, B and D). In the lateral view, the paradiapophyses are ventrally directed, with paired superior and inferior facets, connected to the base of the prezygapophysis by a crest or ridge; the pre- and postzygapophyses appear connected by a short crest; large lateral foramina are observed on many vertebrae. The cotyles/condyles are round in outline. Observations of individual vertebrae indicate that the neural arch lamina does not display fully developed zygosphenes (Fig. 2, A to K). However, in some vertebrae, small projections on the lateral margins of the lamina are interpreted here as partially formed zygosphenes (21). In the ventral view, the centra are triangular, with prominent ventral keels, ventrally directed paradiapophyses, and large subcentral foramina. Rib heads are complex with a double-headed facet and tubercles for intercostal musculature (Figs. 2, A to K, and 3, B and D); distal rib ends bear a distinct facet, interpreted here as the origin of the musculus costocutaneous inferior.

In the dorsolateral view (fig. S3) within the second trunk mass, anterior to the first caudal vertebrae, there are two to three straight, stout, nonarticulating “ribs” or transverse processes, the last of which bears a spatulate distal tip similar to the one recognized sacral rib of *Pachyrhachis problematicus* (3). The fossil snake *N. rionegrina* (6, 8) has shorter, stouter sacral ribs than *X. myanmarensis*; however, their ribs both display fusion to the corresponding vertebra as transverse processes (6, 8). These two, possibly three, unusual transverse processes define the cloacal/pelvic region; girdle or limb elements are not evident. In modern limbless anguids or skinks (20), the sacral region is defined by two large and tuberculate transverse processes, unlike the gracile processes in *Xiaophis*.

Within and posterior to the second trunk mass (Fig. 1 and figs. S1 to 4A and S5, A and B) are ~ 10 preserved caudal vertebrae (Fig. 2, E and F). They are small (~ 0.3 to 0.4 mm) with short neural spines, flattened neural arches, and no zygosphenes and zygantra (21). The transverse processes are anteriorly directed, and there are short, spatulate haemal spines or chevrons preserved on two vertebrae (Fig. 2, E and F) (5, 6, 8). A large debris mass (~ 10 mm in length)

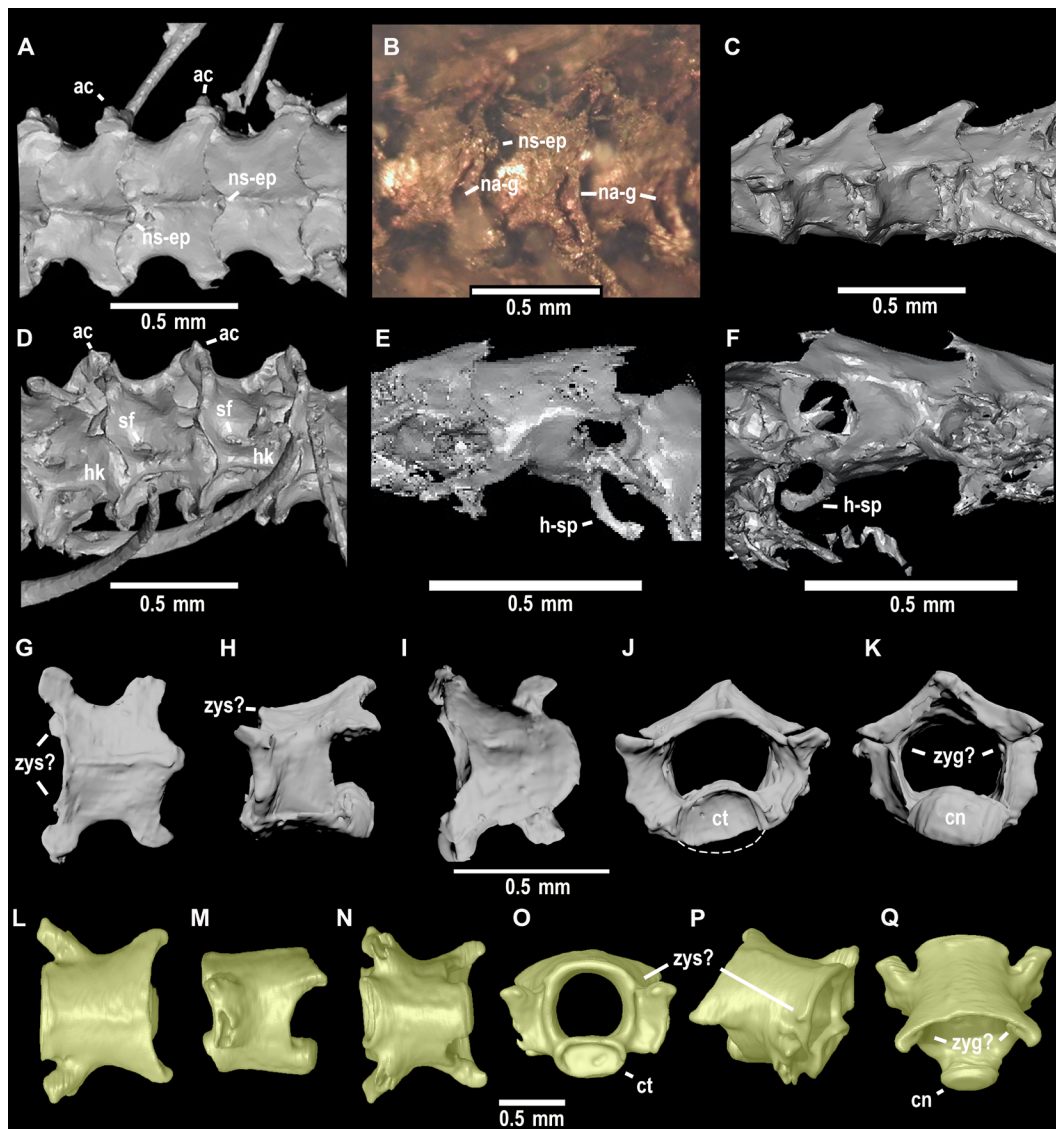


Fig. 2. Details of skeletal elements of *Xiaophis myanmarensis* (DIP-S-0907) and vertebral element of neonate of extant *Cylindrophis ruffus* (colorized light yellow for contrast with fossil material in gray). (A to K) *X. myanmarensis*. (L to Q) *C. ruffus*. (A) CT image of dorsal view of mid-precloacal vertebrae, anterior to left. (A) Light photograph of the dorsal view of mid-precloacal vertebrae, anterior to left. (C) CT image of left lateral view of mid-precloacal vertebrae, anterior to left. (D) CT image of the ventral view of mid-precloacal vertebrae, anterior to left. (E) CT image of the left lateral view showing the articulating haemal spine. (F) CT image of the right lateral view of caudal vertebrae showing the articulating haemal spine. (G to K) CT renderings of isolated precloacal vertebrae of *X. myanmarensis* (DIP-S-0907) in dorsal view (G), left lateral view (H), ventral view (I), anterior view (J), and posterior view (K). (L to Q) CT renderings of isolated precloacal vertebrae of neonate *C. ruffus*. (L) Dorsal view. (M) Left lateral view. (N) Ventral view. (O) Anterior view. (P) Right dorsolateral view. (Q) Posterodorsal view. ac, accessory process; cn, condyle; ct, cotyle; hk, haemal keel; h-sp, haemal spine; na-g, neural arch groove; ns-ep, neural spine epiphyseal pit; sf, subcentral foramina; zyg?, incipient zygantrum; zys?, incipient zygosphenes.

that is covered in poorly preserved scales obscures the posteriormost part of the body.

DISCUSSION

The anatomy of DIP-S-0907 shows similarities to extant embryonic-to-neonate snakes such as the neonate of a southeast Asian pipe snake *C. ruffus* (Figs. 2, A to Q, and 3, A to D) or the embryos (head length, 5 mm) and neonates (head length, 8.0 mm) of the colubroid *Natrix natrix* (21): (i) The neural canal is at least twice as large as the centrum body (Figs. 2, A to Q, and 3, A to D); (ii) some verte-

bral centra in *Xiaophis* display a notochordal canal that is present but undergoing endochondral ossification similar to *Cylindrophis* (Fig. 3, A to D) and *Natrix* (21). A relatively large neural canal coupled with the presence of a notochordal canal can also be observed in juveniles of the typhlopoid *Anilius (Rhamphotylops) bicolor* and the python *Antaresia stimsoni* (fig. S6); (iii) absent or weak ossification of the zygosphenes and zygosphenial joint (zygosphenes + zygantrum) is consistent with embryonic-to-neonate extant snakes [facets absent in embryonic *Cylindrophis* (Figs. 2, A to Q, and 3, A to D) but just forming, along with zygapophyses, in neonate *Natrix* (21)]. Coupled with extremely small size (estimated ≤ 8.0 cm in total

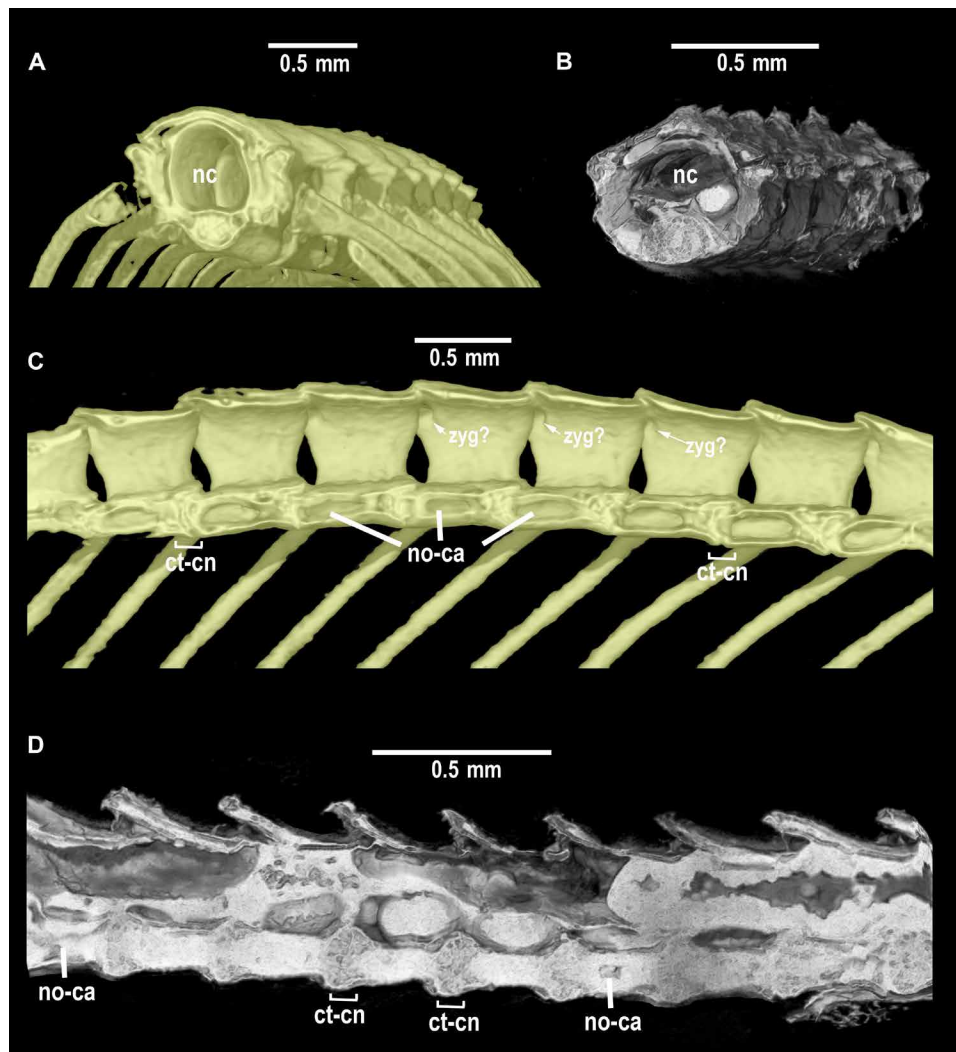


Fig. 3. High-definition CT images of neonate vertebral column of *C. ruffus* (colorized light yellow for contrast with fossil material in gray) compared to *X. myanmarensis*. Cross-sectional views through precloacal vertebrae of (A) *C. ruffus*, anterolateral view (note the incipient formation of zygosphenial joint as small nubs on neural arch lamina facing into small facets of posterior arch portion of more anterior vertebra in partial section) and (B) *X. myanmarensis* at level of zygosphenic tectum, anterolateral view. Sagittal sections through precloacal vertebral series of (C) *C. ruffus*, anterior to right [note the presence of soft but distinct zygantra facets on posterior and internal surface of neural arch, and open notochordal canals (no-ca) and distinct ossification of cotyle-condyle (ct-cn) portions of bony centra at joints] and (D) *X. myanmarensis*, anterior to right [note that neural canal (nc) and notochordal canals are infilled with permineralized material of similar density, although spaces are obvious in both canals; density and histology of bone at cotyle-condyle joints differs from permineralized infilling material; cotyle-condyle bone-forming joints are similar to that observed in neonate of *C. ruffus* (C)].

body length), these features indicate that DIP-S-0907 is the first known fossil embryonic-to-neonate snake. *Xiaophis* provides direct evidence that many aspects of snake vertebral ontogeny have remained conservative for nearly 100 Ma, such as delayed development of the zygosphenic-zygantra system and late closure of the notochordal canal.

The preserved integumentary details of DIP-S-0907 indicate that the scales are imbricated, diamond-shaped, and thin (fig. S5, A and B). Large, rectangular, ventral scales (paired or unpaired), typical of most modern snakes, are not observed, nor are the annular scales of amphisbaenians. DIP-V-15104 appears to represent a shed skin of a larger individual, but the limited material precludes referral to *Xiaophis* (Fig. 4, A to C, and fig. S5C), although it appears to be the skin of a snake. The scales of DIP-V-15104 are diamond-shaped or

ovoid diamond-shaped, with deep lines formed by integument between each scale. Some rows converge as observed ventrally in extant snakes (that is, the bifurcations of the scale rows point ventrally). No enlarged ventral scales (gastrosteges) can be observed. Light and dark areas distributed across the shed skin reveal color patterning, but original color is not preserved. There is an irregular zone with circles or rings of dark patterning (Fig. 4, A to C, and fig. S5C).

The new remains of a Cenomanian-aged embryonic-to-neonate snake from the eastern margin of Laurasia, together with the skin fragment, are important new data points in our understanding of the patterns and processes of ancient snake evolution, ontogeny, radiation, and diversification (fig. S7; see also the Supplementary Materials). As with other vertebrate fossils from Myanmar amber (15–19), the quality of preservation of such a small individual, as represented by

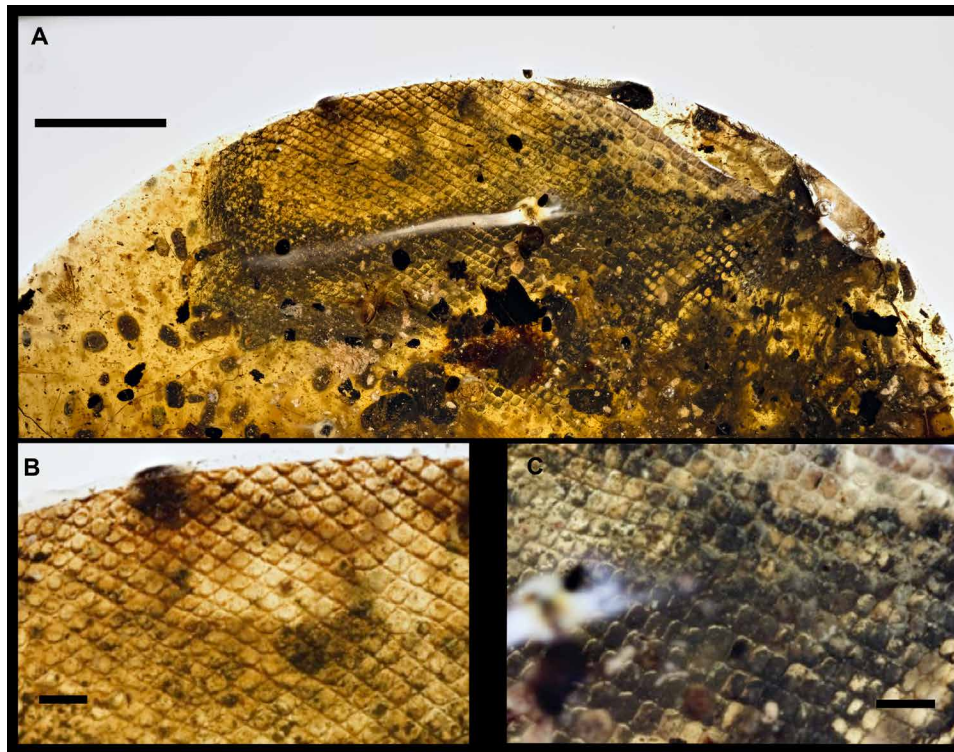


Fig. 4. Light photographs of probable snake shed skin (DIP-V-15104). (A) Overall view of the complete specimen. Scale bar, 5 mm. (B) Close-up of the left portion of the specimen showing converging scale rows (center top). Scale bar, 1 mm. (C) Close-up of the right mid-region of the specimen. Scale bar, 1 mm.

this snake skeletal specimen, provides unique osteological and soft tissue data on a previously unseen stage of ancient snake ontogeny that compares well to ontogenetic stages in modern snakes. Both the skeletal and shed-skin specimens, from the amber clasts they are preserved in, present new data on a formerly unknown ancient snake ecology—a terrestrial (possibly arboreal) ecosystem marginal to inland and coastal fluvial environments (24). The amber inclusions provide taphonomic support for a forested ecosystem, as both DIP-S-0907 and DIP-V-15104 contain abundant insects, carbonized insect feces, and fragmentary plant materials, which are usually associated with “litter amber” or resin produced near the forest floor (25). Almost all other known Cenomanian snakes show aquatic adaptations (3–5) or are found in fluvially deposited sediments (2) and cannot be conclusively linked to terrestrial habits [cf. oldest known snakes (26)]. The only exception is *N. rionegrina* from mesic-xeric ecosystems in the Cenomanian of Gondwanan Argentina (6, 8).

X. myanmarensis (DIP-S-0907) and DIP-V-15104 are a new and important data point in the Mesozoic fossil record of eastern Laurasian snakes (excluding Gondwanan India, which became a part of Eurasia only in the Cenozoic) and demonstrate that snakes had achieved a circumglobal distribution at least 100 Ma ago (fig. S7; see also the Supplementary Materials). Adding *X. myanmarensis* to a phylogenetic analysis of early snakes (26) reconstructs it between basal Gondwanan taxa, such as *Najash*, *Dinilysia*, and *Sanajeh*, and modern (crown) snakes (fig. S8). The morphological resemblance of *Xiaophis* to these basal Gondwanan fossil snakes (6–9, 27–29), coupled with its position between the latter snakes and crown snakes, is consistent with a Gondwanan ancestry for crown snakes. Osteological similarities between *Xiaophis* and Gondwanan snakes also expand our knowledge of Cretaceous madtsoiid-like snake dis-

tributions. This is particularly important because southeast Asian exotic terranes were sourced from northern Australia during the Late Triassic to Late Jurassic (fig. S7; see also the Supplementary Materials) (30). A complex series of paleobiogeographic scenarios arise from these new data. As an example, one hypothesis, among many, could be that the Myanmar amber faunal and floral elements, including *Xiaophis*, were dispersed from Austral-Gondwana to Laurasia as relicts carried on this island arc for tens of millions of years (30). It is also possible that many of these faunal elements were sourced from Laurasia only when the terranes and island arc were in some proximity to eastern Laurasia; a future step for other faunal and floral elements is to link them to their sister taxa within Laurasian or Gondwanan clades (15–19). An alternative scenario, specific to *Xiaophis*, is that its kind descended from aquatic or amphibious snakes that had secondarily colonized terrestrial environments on the islands of these allochthonous terranes; the broad distribution and surprising diversity of Cenomanian-aged marine snakes found throughout the Tethys (3–5) and most recently in the Cenomanian of South America (10) hint at unexpected snake diversity in both terrestrial and aquatic realms (fig. S7; see also the Supplementary Materials). Finally, *X. myanmarensis* offers unprecedented opportunities to observe aspects of skeletal ontogeny in a fossil snake, providing exceptional and unexpected insights into the evolution of one of nature’s most successful and iconic animal groups.

MATERIALS AND METHODS

Material and photography

Two specimens were obtained from an amber deposit in the Angbamo area, Tanai Village, Hukawng Valley of Myanmar. Age was estimated

at 99 Ma ago (98.8 ± 0.6 Ma ago; earliest Cenomanian) based on U-Pb dating of zircons from the volcanoclastic matrix containing the amber (12). Two specimens were cataloged as DIP-V-15104 and DIP-S-0907. DIP-V-15104 was 44.5 by 46.8 mm and 8.61 g in weight; DIP-S-0907 was 17.1 by 24.8 by 39.0 mm and 9.30 g in weight. The original specimens are housed in the DIP, Chaozhou, China.

The pieces of amber were examined with a Leica MZ 12.5 dissecting microscope with a drawing tube attachment. Photographs were taken using a Canon digital camera (5D Mark III, MP-E 65mm f/2.8 1-5X) fitted to a macro rail (Cognisys) and processed in Helicon Focus 5.1. Final figures were prepared with Photoshop CS5 (Adobe) and Illustrator CS5 (Adobe).

μ CT scanning and three-dimensional reconstruction

Specimen DIP-S-0907 was scanned with a MicroXCT 400 (Carl Zeiss X-ray Microscopy Inc.) at the Institute of Zoology, Chinese Academy of Sciences. The entire animal (Fig. 1) was divided into seven scans that were combined to create a single model, and the scans were conducted with a beam strength of 60 kV, 8 W, and absorption contrast and a spatial resolution of 2.5464 μ m. In addition, specimen DIP-S-0907 was imaged using propagation phase-contrast synchrotron radiation microtomography on the beamline 13W at the Shanghai Synchrotron Radiation Facility. The isotropic voxel size was 2.25 μ m.

On the basis of the obtained image stacks, structures of the specimen were reconstructed and separated with Amira 5.4 (Visage Imaging). The subsequent volume rendering was performed with Avizo 9.0 (Thermo Fisher Scientific) and VG Studiomax 2.1 (Volume Graphics). The neonate *C. ruffus* was loaned from the Western Australian Museum (WAM R49553) and scanned with a SkyScan 1076 (Bruker MicroCT) at Adelaide Microscopy, University of Adelaide, Australia. The scan settings were 65 kV, 153 μ A, no filter, and an isotropic voxel size of 8.7 μ m. The reconstruction was carried out using the software NRecon (Bruker MicroCT), and the volume renderings were created in the software Avizo 9.0 (Thermo Fisher Scientific).

Phylogenetic analysis

The phylogenetic relationships of *X. myanmarensis* were tested using a previously published data matrix of extant and fossil snake species (26). *X. myanmarensis* could be scored for 17 of 237 characters (see the Supplementary Materials for details), and the data set was analyzed in PAUP* 4.0b (31) using parsimony optimization, heuristic search, 1000 random addition replicates, tree-bisection-reconnection branch swapping, and characters unordered and with equal weights. Bootstrap support values were obtained in the phylogenetic program TNT v.1.5 (32) using 10,000 replicates and default settings.

SUPPLEMENTARY MATERIALS

Supplementary material for this article is available at <http://advances.sciencemag.org/cgi/content/full/4/7/eaat5042/DC1>

Supplementary Text

Fig. S1. High-definition x-ray μ CT image of holotype skeleton (DIP-S-0907).

Fig. S2. High-definition x-ray μ CT images of holotype skeleton (DIP-S-0907).

Fig. S3. Probable sacral ribs, right dorsolateral view, x-ray μ CT image of holotype.

Fig. S4. Precloacal vertebrae of *X. myanmarensis* and other snakes.

Fig. S5. Scales of and second-scale specimen.

Fig. S6. Mid-sagittal sections through posterior precloacal vertebrae of two juvenile snakes.

Fig. S7. Distribution of Late Jurassic (Barremian)–Late Cretaceous (Maastrichtian) snakes represented on a map of Cenomanian arrangement of land masses.

Fig. S8. Strict consensus of 2040 equally parsimonious trees.

Data file S1. Data matrix for phylogenetic analysis: Nexus file format.

References (33–93)

REFERENCES AND NOTES

- G. Cuny, J. J. Jaeger, M. Mahboub, J.-C. Rage, Les plus anciens serpents (Reptila, Squamata) connus. Mise au point sur l'âge géologique des serpents de la partie moyenne du Crétacé. *C. R. Acad. Sci. Paris II* **311**, 1267–1272 (1990).
- J. D. Gardner, R. L. Cifelli, A primitive snake from the Cretaceous of Utah. *Spec. Pap. Palaeontol.* **60**, 87–100 (1999).
- M. W. Caldwell, M. S. Y. Lee, A snake with legs from the marine Cretaceous of the Middle East. *Nature* **386**, 705–709 (1997).
- M. S. Y. Lee, M. W. Caldwell, J. D. Scanlon, A second primitive marine snake: *Pachyophis woodwardi* from the Cretaceous of Bosnia-Herzegovina. *J. Zool.* **248**, 509–520 (1999).
- E. Tchernov, O. Rieppel, H. Zaher, M. J. Polcyn, L. L. Jacobs, A fossil snake with limbs. *Science* **281**, 2010–2012 (2000).
- S. Apesteguía, H. Zaher, Cretaceous terrestrial snake with robust hindlimbs and a sacrum. *Nature* **440**, 1037–1040 (2006).
- M. W. Caldwell, A. Albino, Exceptionally preserved skeletons of the Cretaceous snake *Dinilysia patagonica* Woodward, 1901. *J. Vertebr. Paleontol.* **22**, 861–866 (2003).
- A. Palci, M. W. Caldwell, A. Albino, Emended diagnosis and phylogenetic relationships of the Upper Cretaceous fossil snake *Najash rionegrina* Apesteguía and Zaher, 2006. *J. Vertebr. Paleontol.* **33**, 131–140 (2013).
- H. Zaher, C. A. Scanferla, The skull of the Upper Cretaceous snake *Dinilysia patagonica* Smith-Woodward, 1901, and its phylogenetic position revisited. *Zool. J. Linn. Soc.* **164**, 194–238 (2012).
- A. Albino, J. D. Carrillo-Briceño, J. M. Neenan, An enigmatic aquatic snake from the Cenomanian of Northern South America. *Peer J* **4**, e2027 (2016).
- J.-C. Rage, R. Vullo, D. Néraudeau, The mid-Cretaceous snake *Simuliophis rochebrunei* Sauvage, 1880 (Squamata: Ophidia) from its type area (Charentes, southwestern France): Redescription, distribution, and palaeoecology. *Cretac. Res.* **58**, 234–253 (2016).
- G. Shi, D. A. Grimaldi, G. E. Harlow, J. Wang, J. Wang, M. Yang, W. Lei, Q. Li, X. Li, Age constraint on Burmese amber based on U–Pb dating of zircons. *Cretac. Res.* **37**, 155–163 (2012).
- D. A. Grimaldi, M. S. Engel, P. C. Nascimbene, Fossiliferous Cretaceous amber from Myanmar (Burma): Its rediscovery, biotic diversity, and paleontological significance. *Am. Mus. Novit.* **3361**, 1–71 (2002).
- A. Ross, C. Mellish, P. York, B. Crighton, Burmese amber, in *Biodiversity of Fossils in Amber From the Major World Deposits*, D. Penney, Ed. (Siri Scientific Press, 2010), pp. 209–236.
- J. D. Daza, E. L. Stanley, P. Wagner, A. M. Bauer, D. A. Grimaldi, Mid-Cretaceous amber fossils illuminate the past diversity of tropical lizards. *Sci. Adv.* **2**, e1501080 (2016).
- P. C. Nascimbene, C. J. Dove, D. A. Grimaldi, A. R. Schmidt, Exceptional preservation of feather microstructures in amber from diverse faunas (Theropoda: Paraves) during the Lower and mid-Cretaceous, in *9th European Palaeobotany-Palynology Conference: Abstract Book* (CLEUP, 2014), pp. 113–114.
- D. B. Thomas, P. C. Nascimbene, C. J. Dove, D. Grimaldi, H. F. James, Seeking carotenoid pigments in amber-preserved fossil feathers. *Sci. Rep.* **4**, 5226 (2014).
- L. Xing, R. C. McKellar, M. Wang, M. Bai, M. J. Benton, J. Zhang, Y. Wang, K. Tseng, M. G. Lockley, G. Li, W. Zhang, X. Xu, Mummified precocial bird wings in mid-Cretaceous Burmese amber. *Nat. Commun.* **7**, 12089 (2016).
- L. Xing, R. C. McKellar, X. Xu, G. Li, M. Bai, W. S. Persons IV, T. Miyashita, M. J. Benton, J. Zhang, A. P. Wolfe, Q. Yi, K. Tseng, H. Ran, P. J. Currie, A feathered dinosaur tail with primitive plumage trapped in mid-Cretaceous amber. *Curr. Biol.* **26**, 3352–3360 (2016).
- A. Mirielle, C. A. Hipsley, J. Erens, M. Gehara, A. Rakotoarison, F. Glaw, J. Müller, M. Vences, Distinct patterns of desynchronized limb regression in Malagasy scincine lizards (Squamata, Scincidae). *PLOS ONE* e0126074 (2015).
- L. Winchester, A. d'A. Bellairs, Aspects of vertebral development in lizards and snakes. *J. Zool.* **181**, 495–525 (1977).
- R. R. Pinto, A. R. Martins, F. Curcio, L. de O. Ramos, Osteology and cartilaginous elements of *Trilepdia salgueiroi* (Amaral, 1954) (Scolophorida: Leptotyphlopidae). *Anat. Rec.* **298**, 1722–1747 (2015).
- N. R. Longrich, B.-A. S. Bhullar, J. A. Gauthier, A transitional snake from the Late Cretaceous period of North America. *Nature* **488**, 205–208 (2012).
- R. D. Cruickshank, K. Ko, Geology of an amber locality in the Hukawng Valley, Northern Myanmar. *J. Asian Earth Sci.* **21**, 441–455 (2003).
- V. Perrichot, Early Cretaceous amber from south-western France: Insight into the Mesozoic litter fauna. *Geol. Acta* **2**, 9–22 (2004).

26. M. W. Caldwell, R. L. Nydam, A. Palci, S. Apesteguía, The oldest known snakes from the Middle Jurassic-Early Cretaceous provide insights on snake evolution. *Nat. Commun.* **6**, 5996 (2015).
27. J. A. Wilson, D. M. Mohabey, S. E. Peters, J. J. Head, Predation upon hatchling dinosaurs by a new snake from the Late Cretaceous of India. *PLOS Biol.* **8**, e1000322 (2010).
28. J. D. Scanlon, M. S. Y. Lee, The Pleistocene serpent *Wonambi* and the early evolution of snakes. *Nature* **403**, 416–420 (2000).
29. J. D. Scanlon, Skull of the large non-macrostromatan snake *Yurlunggur* from the Australian Oligo-Miocene. *Nature* **439**, 839–842 (2006).
30. I. Metcalfe, Gondwanaland dispersion, Asian accretion and evolution of eastern Tethys. *Aust. J. Earth Sci.* **43**, 605–623 (1996).
31. D. L. Swofford, PAUP*: Phylogenetic Analysis Using Parsimony, version 4.0b10 (Sinauer Associates, 2003).
32. P. A. Goloboff, J. S. Farris, K. C. Nixon, TNT, a free program for phylogenetic analysis. *Cladistics* **24**, 774–786 (2008).
33. M. E. Jones, C. L. Anderson, C. A. Hipsley, J. Müller, S. E. Evans, R. R. Schoch, Integration of molecules and new fossils supports a Triassic origin for Lepidosauria (lizards, snakes, and tuatara). *BMC Evol. Biol.* **13**, 208 (2013).
34. M. W. Caldwell, J. Calvo, Details of a new skull and articulated cervical column of *Dinilysia patagonica* Woodward, 1901. *J. Vertebr. Paleontol.* **28**, 349–362 (2008).
35. T. C. Ladeke, D. W. Krause, J. D. Scanlon, N. J. Kley, A Late Cretaceous (Maastrichtian) snake assemblage from the Maevarano Formation, Mahajanga Basin, Madagascar. *J. Vertebr. Paleontol.* **30**, 109–138 (2010).
36. J.-C. Rage, C. Werner, Mid-Cretaceous (Cenomanian) snakes from Wadi Abu Hashim, Sudan: The earliest snake assemblage. *Palaeont. Afr.* **35**, 85–110 (1999).
37. E. Gheerbrant, J.-C. Rage, Paleobiogeography of Africa: How distinct from Gondwana and Laurasia? *Palaeogeogr. Palaeoclimatol. Palaeoecol.* **241**, 224–246 (2006).
38. J. P. Rio, P. D. Mannion, The osteology of the giant snake *Gigantophis garstini* from the upper Eocene of North Africa and its bearing on the phylogenetic relationships and biogeography of Madtsoiidae. *J. Vertebr. Paleontol.* **37**, e1347179 (2017).
39. Ş. Vasile, Z. Csiki-Sava, M. Venczel, A new madtsoiid snake from the Upper Cretaceous of the Hateg Basin, western Romania. *J. Vertebr. Paleontol.* **33**, 1100–1119 (2013).
40. A. J. Charig, A. C. Milner, *Baryonyx*, a remarkable new theropod dinosaur. *Nature* **324**, 359–361 (1986).
41. P. C. Sereno, A. L. Beck, D. B. Duthiel, B. Gado, H. C. E. Larsson, G. H. Lyon, J. D. Marcot, O. W. M. Rauhut, R. W. Sadleir, C. A. Sidor, D. D. Varricchio, G. P. Wilson, J. A. Wilson, A long-snouted predatory dinosaur from Africa and the evolution of spinosaurids. *Science* **282**, 1298–1302 (1998).
42. P. C. Sereno, The evolution of dinosaurs. *Science* **284**, 2137–2147 (1999).
43. P. C. Sereno, J. A. Wilson, L. M. Witmer, J. A. Whitlock, A. Maga, O. Ide, T. A. Rowe, Structural extremes in a Cretaceous dinosaur. *PLOS ONE* **2**, e1230 (2007).
44. X. Pereda Suberbiola, F. Torcida Fernandez-Baldor, L. A. Izquierdo, P. Huerta, D. Montero, G. Pérez, First rebbachisaurid dinosaur (Sauropoda, Diplodocoidea) from the Early Cretaceous of Spain: Paleobiogeographical implications. *Bull. Soc. Geol. Fr.* **174**, 471–479 (2003).
45. J. I. Ruiz-Omeñaca, J. I. Canudo, Dinosaurios (Saurischia, Ornithischia) en el Barremiense (Cretácico Inferior) de la Península Ibérica. *Ciencias de la Tierra* **26**, 269–312 (2003).
46. P. M. Galton, The ornithomimid dinosaur *Dryosaurus* and a Laurasia-Gondwanaland connection in the Upper Jurassic. *Nature* **268**, 230–232 (1977).
47. P. C. Sereno, J. A. Wilson, H. C. E. Larsson, D. B. Duthiel, H.-D. Sues, Early Cretaceous dinosaurs from the Sahara. *Science* **266**, 267–271 (1994).
48. J. I. Canudo, La ambigüedad paleobiogeográfica de los dinosaurios ibéricos durante el Cretácico Inferior, in *Actas de las III Jornadas sobre Dinosaurios y su Entorno* (Colectivo Arqueológico-Paleontológico Salense, 2006), pp. 21–45.
49. J. I. Canudo, J. L. Barco, X. Pereda-Suberbiola, J. I. Ruiz-Omeñaca, L. Salgado, F. Torcida Fernandez-Baldor, J. M. Gasulla, What Iberian dinosaurs reveal about the bridge said to exist between Gondwana and Laurasia in the Early Cretaceous. *Bull. Soc. Geol. Fr.* **180**, 5–11 (2009).
50. R. Estes, A. M. Báez, Herpetofaunas of North and South America during the Late Cretaceous and Cenozoic: Evidence for interchange? in *The Great American Biotic Interchange*, F. Stehli, G. Webb, D. S. Webb, Eds. (Plenum Press, 1985), pp. 139–197.
51. I. Metcalfe, Gondwanaland dispersion, Asian accretion and evolution of eastern Tethys. *Aust. J. Earth Sci.* **43**, 605–623 (1996).
52. S. J. Bolkay, *Mesophis nopcsai* n. g., n. sp., ein neues, schlangenähnliches Reptil aus der unteren Kreide (Neocom) von Bilek-Selista (Ost-Herzegovina). *Glasnik Zemaljskog Muzeja BiH* **27**, 125–126 (1925).
53. J.-C. Rage, F. Escuillié, Un nouveau serpent bipède du Cénomaniens (Crétacé). Implications phylétiques. *Earth Planet. Sci.* **330**, 513–520 (2000).
54. H. G. Cogger, *Reptiles and Amphibians of Australia* (CSIRO Publishing, 2014).
55. M. W. Caldwell, A. M. Albino, Palaeoenvironment and palaeoecology of three Cretaceous snakes: *Pachyophis*, *Pachyrhachis*, and *Dinilysia*. *Acta Palaeontol. Pol.* **46**, 203–218 (2001).
56. H. Zaher, S. Apesteguía, C. A. Scanferla, The anatomy of the Upper Cretaceous snake *Najash rionegrina* Apesteguía & Zaher, 2006, and the evolution of limblessness in snakes. *Zool. J. Linn. Soc.* **156**, 801–826 (2009).
57. D. J. Candia Halupczok, M. L. Sánchez, G. D. Veiga, S. Apesteguía, Dinosaur tracks in the Kokorkom desert, Candeleros formation (Cenomanian, Upper Cretaceous), Patagonia Argentina: Implications for deformation structures in dune fields. *Cretac. Res.* **83**, 194–206 (2018).
58. A. M. Albino, Lepidosauromorpha, in *Patagonian Mesozoic Reptiles*, Z. Gasparini, L. Salgado, R. A. Coria, Eds. (Indiana Univ. Press, 2007), pp. 87–115.
59. H. A. Leanza, S. Apesteguía, F. E. Novas, M. S. de la Fuente, Cretaceous terrestrial beds from the Neuquén Basin (Argentina) and their tetrapod assemblages. *Cretac. Res.* **25**, 61–87 (2004).
60. A. Albino, Nuevos Boidae Madtsoiinae en el Cretácico tardío de Patagonia (Formación Los Alamitos, Río Negro, Argentina), in *Actas IV Congreso Argentino de Paleontología y Bioestratigrafía*, J. F. Bonaparte, Ed. (Mendoza, 1986), pp. 15–21.
61. R. O. Gómez, A. M. Báez, G. W. Rougier, An anilloid snake from the upper cretaceous of northern Patagonia. *Cretac. Res.* **29**, 481–488 (2008).
62. A. S. Hsiou, A. M. Albino, M. A. Medeiros, R. A. B. Santos, The oldest Brazilian snakes from the cenomanian (early Late Cretaceous). *Acta Palaeontol. Pol.* **59**, 635–642 (2014).
63. A. Albino, J. D. Carrillo-Briceno, J. M. Neenan, An enigmatic aquatic snake from the Cenomanian of Northern South America. *PeerJ* **4**, e2027 (2016).
64. C. F. Ross, H.-D. Sues, W. J. De Klerk, Lepidosaurian remains from the Lower Cretaceous Kirkwood Formation of South Africa. *J. Vertebr. Paleontol.* **19**, 21–27 (1999).
65. R. Hoffstetter, Un serpent terrestre dans le Crétacé inférieur du Sahara. *Bull. Soc. Geol. Fr.* **7**, 897–902 (1959).
66. R. Hoffstetter, Nouveaux restes d'un serpent Boidé (*Madtsoia madagascariensis* nov. sp.) dans le Crétacé supérieur de Madagascar. *Bull. Mus. Natl. Hist. Nat.* **33**, 152–160 (1961).
67. F. de Broin, E. Buffetaut, J. Koeniguer, J.-C. Rage, D. Russell, P. Taquet, C. Vergnaud-Grazzini, S. Wenz, La faune de vertébrés continentaux du gisement d'In Beceten (Sénouien du Niger). *C. R. Acad. Sci. Paris* **279**, 469–472 (1974).
68. M. A. Khalifa, O. Catuneanu, Sedimentology of the fluvial and fluvio-marine facies of the Bahariya Formation (early Cenomanian), Bahariya Oasis, Western Desert, Egypt. *J. Afr. Earth Sci.* **51**, 89–103 (2008).
69. J.-C. Rage, R. Vullo, D. Néraudeau, The mid-Cretaceous snake *Simoliophis rochebruni* Sauvage, 1880 (Squamata: Ophidia) from its type area (Charentes, southwestern France): Redescription, distribution, and palaeoecology. *Cretac. Res.* **58**, 234–253 (2016).
70. J.-C. Rage, H. Cappetta, Vertebrates from the Cenomanian, and the geological age of the Draa Ubari fauna (Libya). *Annal. Paleontol.* **88**, 79–84 (2002).
71. J.-C. Rage, D. B. Duthiel, Amphibians and squamates from the Cretaceous (Cenomanian) of Morocco A preliminary study, with description of a new genus of pipid frog. *Palaeontogr. Abt. A* **285**, 1–22 (2008).
72. D. M. Mohabey, J. J. Head, J. A. Wilson, A new species of the snake Madtsoia from the upper cretaceous of India and its paleobiogeographic implications. *J. Vertebr. Paleontol.* **31**, 588–595 (2011).
73. S. B. Bhatia, R. S. Rana, Palaeogeographic implications of the charophyta and ostracoda of the intertrappean beds of peninsular India. *Mém. Soc. Géol. Fr.* **147**, 29–36 (1984).
74. G. V. R. Prasad, A. Sahni, Coastal-plain microvertebrate assemblage from the terminal cretaceous of Asifabad, peninsular India. *J. Palaeontol. Soc. Ind.* **32**, 5–19 (1987).
75. J.-C. Rage, G. V. R. Prasad, S. Bajpai, Additional snakes from the uppermost Cretaceous (Maastrichtian) of India. *Cretac. Res.* **25**, 425–434 (2004).
76. J.-C. Rage, Un serpent primitif (Reptilia, Squamata) dans le Cénomaniens (base du Cretace supérieur). *C. R. Acad. Sci. II* **307**, 1027–1032 (1988).
77. H. Astibia, E. Buffetaut, A. D. Buscalioni, H. Cappetta, C. Corral, R. Estes, F. García-Garmilla, J. J. Jaeger, E. Jimenez-Fuentes, J. L. Loeuff, J. M. Mazin, X. Orue-Etxebarria, J. Pereda-Suberbiola, J. E. Powell, J. C. Rage, J. Rodriguez-Lazaro, J. L. Sanz, H. Tong, The fossil vertebrates from Lano (Basque Country, Spain); new evidence on the composition and affinities of the Late Cretaceous continental faunas of Europe. *Terra Nova* **2**, 460–466 (1990).
78. B. H. Breithaupt, Paleontology and paleoecology of the Lance Formation (Maastrichtian), east flank of Rock Springs Uplift, Sweetwater County, Wyoming. *Rocky Mt. Geol.* **21**, 123–151 (1982).

79. D. E. Fastovsky, A. Bercovici, The Hell Creek Formation and its contribution to the Cretaceous–Paleogene extinction: A short primer. *Cretac. Res.* **57**, 368–390 (2016).
80. R. C. Fox, Fossil snakes from the upper Milk River Formation (Upper Cretaceous), Alberta. *Can. J. Earth Sci.* **12**, 1557–1563 (1975).
81. T. H. D. Payenberg, D. R. Braman, D. W. Davis, A. D. Miall, Litho- and chronostratigraphic relationships of the Santonian Campanian Milk River Formation in southern Alberta and Eagle Formation in Montana utilising stratigraphy, U Pb geochronology, and palynology. *Can. J. Earth Sci.* **39**, 1553–1577 (2002).
82. J. G. Armstrong-Ziegler, An aniliid snake and associated vertebrates from the Campanian of New Mexico. *J. Paleol.* **52**, 480–483 (1978).
83. J. E. Fassett, Geology and coal resources of the Upper Cretaceous Fruitland Formation, San Juan Basin, New Mexico and Colorado, in *Geologic Assessment of Coal in the Colorado Plateau: Arizona, Colorado, New Mexico, and Utah*, M. A. Kirschbaum, L. N. R. Roberts, and L. R. H. Biewick, Eds. (U.S. Geological Survey, 2000), pp. Q1–Q131.
84. J. D. Gardner, R. L. Cifelli, A primitive snake from the Cretaceous of Utah. *Spec. Pap. Paleontol.* **60**, 87–100 (1999).
85. J. R. Garrison Jr., D. Brinkman, D. J. Nichols, P. Layer, D. Burge, D. Thayne, A multidisciplinary study of the lower cretaceous cedar mountain formation, Mussentuchit Wash, Utah: A determination of the paleoenvironment and paleoecology of the *Eolambia caroljonesa* dinosaur quarry. *Cretac. Res.* **28**, 461–494 (2007).
86. M. C. A. Martinez, “Fossil vertebrates from the Cerro del Pueblo Formation, Coahuila, Mexico, and the distribution of Late Campanian (Cretaceous) terrestrial vertebrate faunas,” thesis, Southern Methodist University, Dallas, TX (2010), 135 pp.
87. R. L. Nydam, Lizards and snakes from the Cenomanian through Campanian of southern Utah: Filling the gap in the fossil record of Squamata from the Late Cretaceous of the Western Interior of North America, in *At the Top of the Grand Staircase: The Late Cretaceous of Southern Utah*, A. L. Titus, M. A. Loewen Eds. (Indiana Univ. Press, 2013), pp. 370–423.
88. J. G. Eaton, Biostratigraphic framework for the Upper Cretaceous rocks of the Kaiparowits Plateau, southern Utah, in *Stratigraphy, Depositional Environments, and Sedimentary Tectonics of the Western Margin, Cretaceous Western Interior Seaway*, J. D. Nations, J. G. Eaton, Eds. (Geological Society of America, 1991), GSA, special paper 260, pp. 47–63.
89. T. A. Gates, S. D. Sampson, L. E. Zanno, E. M. Roberts, J. G. Eaton, R. L. Nydam, J. H. Hutchison, J. A. Smith, M. A. Loewen, M. A. Getty, Biogeography of terrestrial and freshwater vertebrates from the late Cretaceous (Campanian) Western Interior of North America. *Palaeogeogr. Palaeoclimatol. Palaeoecol.* **291**, 371–387 (2010).
90. R. Estes, P. Berberian, Paleocology of a Late Cretaceous vertebrate community from Montana. *Breviora* 343, 1–35 (1970).
91. L. J. Bryant, *Non-Dinosaurian Lower Vertebrates Across the Cretaceous-Tertiary Boundary in Northeastern Montana* (University of California Press, 1989).
92. R. L. Nydam, T. B. Rowe, R. L. Cifelli, Lizards and snakes of the Terlingua Local Fauna (late Campanian), Aguja Formation, Texas, with comments on the distribution of paracontemporaneous squamates throughout the Western Interior of North America. *J. Vertebr. Paleontol.* **33**, 1081–1099 (2013).
93. T. B. Rowe, R. L. Cifelli, T. M. Lehman, A. Weil, The Campanian Terlingua local fauna, with summary of other vertebrates from the Aguja Formation, Trans-Pecos Texas. *J. Vertebr. Paleontol.* **12**, 472–493 (1992).

Acknowledgments

Funding: The authors thank the National Science Fund of China (41790455, 41772008, and 31672345), National Geographic Society, United States (EC0768-15), Fundamental Research Funds for the Central Universities (2652017215), Chinese Academy of Science (YZ201211), Shanghai Synchrotron Radiation Facility (SSRF) for the beam time, 13W of SSRF for the analytical assistance, the Natural Sciences and Engineering Research Council of Canada (DG #23458), and the Australian Research Council (DP #160103005). **Author contributions:** M.W.C. and L.X. designed the project. R.C. and M.B. acquired the specimen, supervised, and conducted the initial analytical work. Y.L., H.S., and K.W. performed the earlier analyses. M.W.C., R.C.M., R.L.N., A.P., M.S.Y.L., and T.R.S. interpreted the data. M.W.C. and L.X. wrote the manuscript. M.W.C., L.X., R.C.M., R.L.N., A.P., T.R.S., R.C., and M.B. contributed equally to the completion of the manuscript, analyses, and images. **Competing interests:** The authors declare that they have no competing interests. **Data and materials availability:** All data needed to evaluate the conclusions in the paper are present in the paper and/or the Supplementary Materials. Additional data related to this paper may be requested from the authors.

Submitted 5 March 2018

Accepted 27 June 2018

Published 18 July 2018

10.1126/sciadv.aat5042

Citation: L. Xing, M. W. Caldwell, R. Chen, R. L. Nydam, A. Palci, T. R. Simões, R. C. McKellar, M. S. Y. Lee, Y. Liu, H. Shi, K. Wang, M. Bai, A mid-Cretaceous embryonic-to-neonate snake in amber from Myanmar. *Sci. Adv.* **4**, eaat5042 (2018).

A mid-Cretaceous embryonic-to-neonate snake in amber from Myanmar

Lida Xing, Michael W. Caldwell, Rui Chen, Randall L. Nydam, Alessandro Palci, Tiago R. Simões, Ryan C. McKellar, Michael S. Y. Lee, Ye Liu, Hongliang Shi, Kuan Wang and Ming Bai

Sci Adv 4 (7), eaat5042.
DOI: 10.1126/sciadv.aat5042

ARTICLE TOOLS	http://advances.sciencemag.org/content/4/7/eaat5042
SUPPLEMENTARY MATERIALS	http://advances.sciencemag.org/content/suppl/2018/07/16/4.7.eaat5042.DC1
REFERENCES	This article cites 78 articles, 8 of which you can access for free http://advances.sciencemag.org/content/4/7/eaat5042#BIBL
PERMISSIONS	http://www.sciencemag.org/help/reprints-and-permissions

Use of this article is subject to the [Terms of Service](#)

Science Advances (ISSN 2375-2548) is published by the American Association for the Advancement of Science, 1200 New York Avenue NW, Washington, DC 20005. 2017 © The Authors, some rights reserved; exclusive licensee American Association for the Advancement of Science. No claim to original U.S. Government Works. The title *Science Advances* is a registered trademark of AAAS.